

GENERAL TECHNICAL DATA

dimensions:

- height: 43 cm
- width: 128 cm
- depth: 128 cm

- weight:**
- using softwood 165 kg
 - using hardwood 207 kg

- materials:**
- stainless or carbon steel
 - hardwood or softwood

DESCRIPTION

Welded structure combined with wooden planks. Welded 3 mm thick steel sheet structure made of carbon steel s235Jr, galvanised and powder coated in accordance with RAL palette, or entirely of stainless steel 1.4301 ground. Bench seat using 14 wooden planks with a rectangular cross-section of 38 x 80 mm and varying in length from 405 mm to 624 mm. Softwood impregnated and varnished twice or hardwood impregnated and oiled twice.

All items of street furniture must be properly anchored according to the manufacturer's technical instructions. The manufacturer is not liable for damage caused by negligent use or failure to follow instructions.



ZANO
SINCE 1998

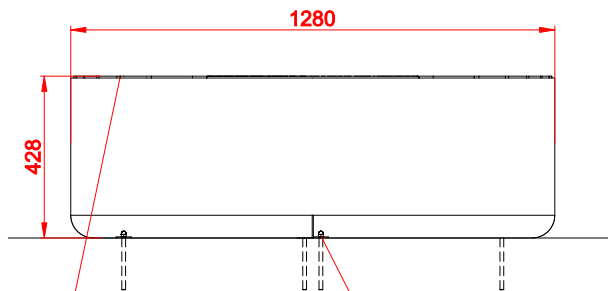


Filip Babiarz

product:
bench UNIVERSE 02.455.5
version: 1
designer: Filip Babiarz

In accordance with the Polish Law on Copyright and Related Rights of 04.02.1994 (Official Journal of Laws No. 24, item 83, corrected: Journal of Laws No. 43, item 170) and in accordance with the EU copyright legislation including all EU directives and regulations on copyright, Zano Mirosław Zarotyński Company, reserves the copyright of drawings, descriptions, 3D models, renderings, graphics, content contained in offers, attachments to offers and all other documents. Its content is the intellectual property of ZANO Mirosław Zarotyński company. The use of author's ideas, solutions, copying, distribution of photos, graphics or fragments of graphics, descriptive texts, for profit, without the permission of the author - ZANO Mirosław Zarotyński company - is prohibited and constitutes a copyright infringement and is punishable.

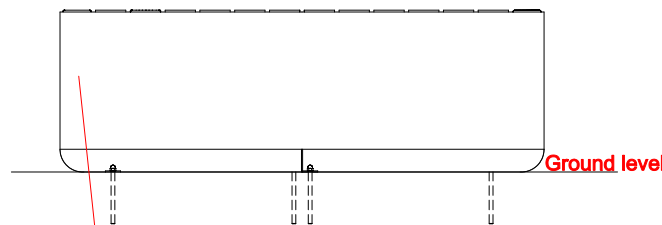
FRONT VIEW



Wood types:
- Soft wood, lacquered
- Hard wood, oiled

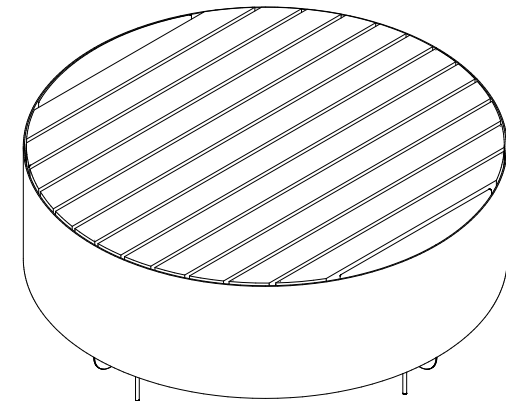
Installation:
- Attached by
bolts to foundation

SIDE VIEW

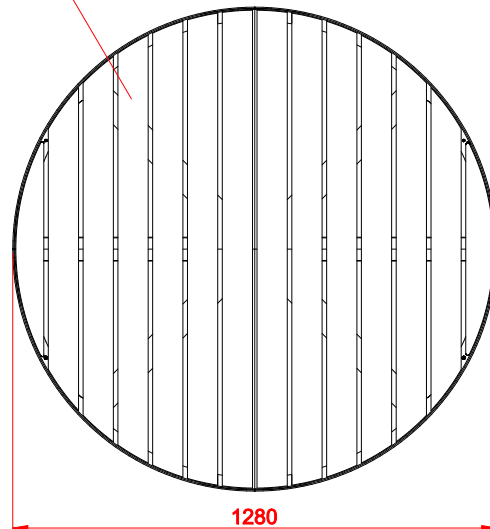


Steel types:
- Construction steel (S235JR, DC01)
galvanized and powder coated
according to RAL palette
- Stainless steel (1.4301) brushed

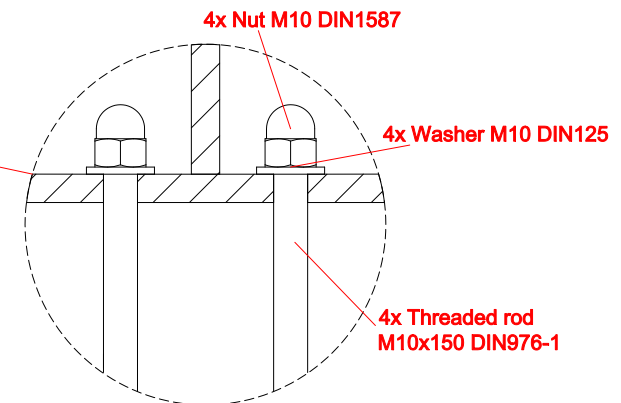
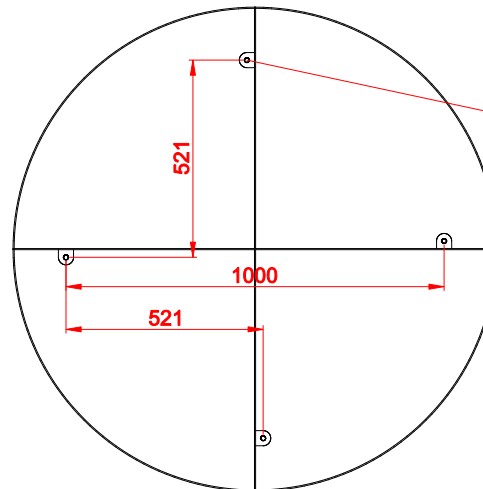
ISOMETRIC VIEW



TOP VIEW



MOUNTING HOLES SPACING



Dimensions given in [mm]

Universe bench 02.455.5

In accordance with the Polish Law on Copyright and Related Rights of 04.02.1994 (Official Journal of Laws No. 24, Item 83, corrected: Journal of Laws No. 43, Item 170) and in accordance with the EU copyright legislation including all EU directives and regulations on copyright, Zano Miroslaw Zarotyński Company, reserves the copyright of drawings, descriptions, 3D models, renderings, graphics, content contained in offers, attachments to offers and all other documents. Its content is the intellectual property of ZANO Miroslaw Zarotyński company. The use of author's ideas, solutions, copying, distribution of photos, graphics or fragments of graphics, descriptive texts, for profit, without the permission of the author - ZANO Miroslaw Zarotyński company - is prohibited and constitutes a copyright infringement and is punishable.



ZANO Street Furniture
Lindegó 7A, 30-148
Cracow, Poland
phone: +48 12 200 20 53
email: office@zano.pl

Number: 150920-v1

Sheet: A4

Scale: 1:20

Mass: with soft wood 165 kg
with hard wood 207 kg