

## GENERAL TECHNICAL DATA

### dimensions:

- height: 25 9/16 inches
- seat height: 18 1/4 inches
- width: 82 7/8 inches
- depth: 82 7/8 inches

**weight:** - using softwood 168 lb  
- using hardwood 346 lb

**materials:** - stainless or carbon steel  
- softwood or hardwood

## DESCRIPTION

Welded construction combined with wooden planks. Welded construction of 0 <sup>5</sup>/<sub>32</sub>" thick steel sheets, in carbon steel ASTM A36 galvanized and powder coated to RAL palette, or entirely in stainless steel AISI 304SS polished.

Bench seat using 5 <sup>35</sup>/<sub>64</sub>" by 2 <sup>19</sup>/<sub>32</sub>" by 1 <sup>1</sup>/<sub>2</sub>" wooden planks. The bench has 40 planks with a length of 19 <sup>11</sup>/<sub>16</sub>". European coniferous wood impregnated and varnished twice or exotic wood impregnated and oiled twice.

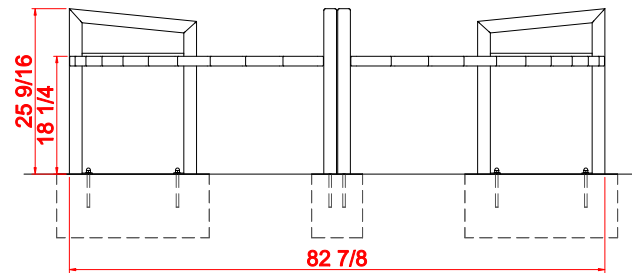
All items of urban furniture must be properly anchored according to the manufacturer's technical instructions. The manufacturer is not liable for damage caused by negligent use or failure to follow instructions.



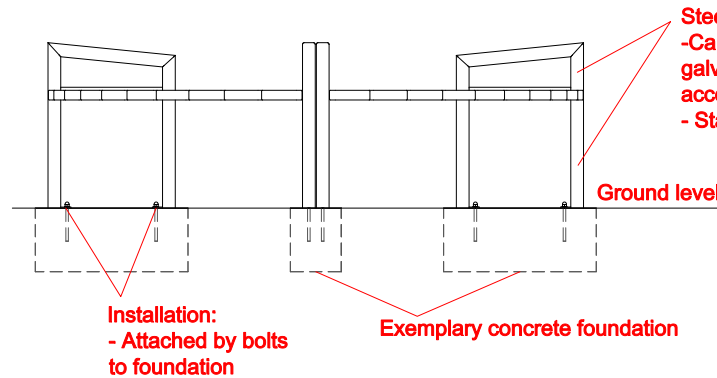
product:  
LUNA bench 02.430  
version: 1

In accordance with the Polish Law on Copyright and Related Rights of 04.02.1994 (Official Journal of Laws No. 24, item 83, corrected: Journal of Laws No. 43, item 170) and in accordance with the EU copyright legislation including all EU directives and regulations on copyright, Zano Mirosław Zarotyński Company, reserves the copyright of drawings, descriptions, 3D models, renderings, graphics, content contained in offers, attachments to offers and all other documents. Its content is the intellectual property of ZANO Mirosław Zarotinski company. The use of author's ideas, solutions, copying, distribution of photos, graphics or fragments of graphics, descriptive texts, for profit, without the permission of the author - ZANO Mirosław Zarotyński company - is prohibited and constitutes a copyright infringement and is punishable.

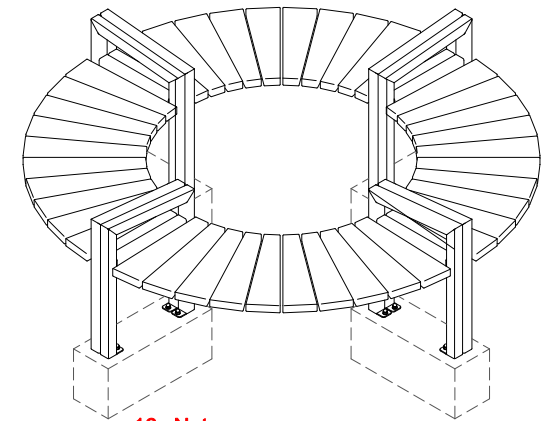
FRONT VIEW



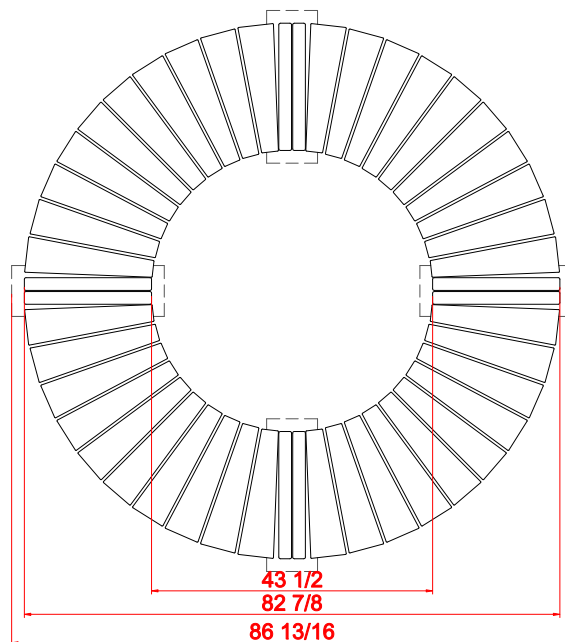
SIDE VIEW



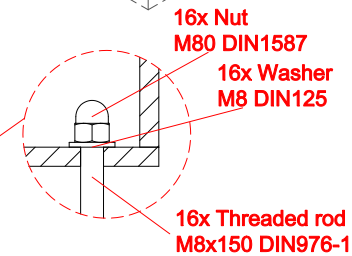
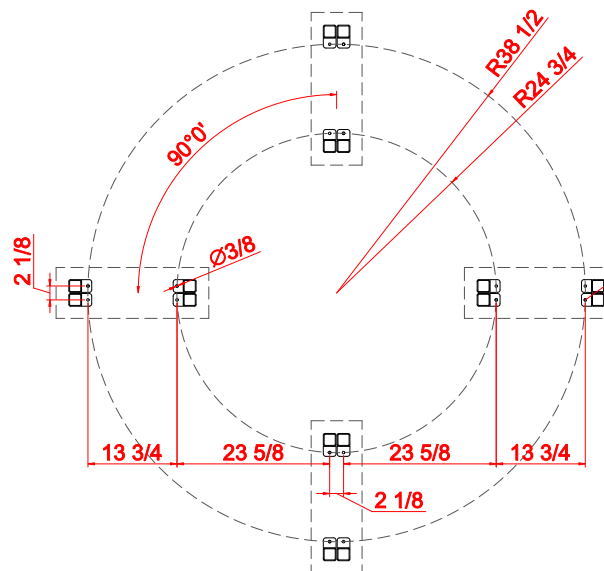
ISOMETRIC VIEW



TOP VIEW



MOUNTING HOLES SPACING



Dimensions given in [inches]

## Banc Luna 02.430

In accordance with the Polish Law on Copyright and Related Rights of 04.02.1994 (Official Journal of Laws No. 24, item 83, corrected: Journal of Laws No. 43, item 170) and in accordance with the EU copyright legislation including all EU directives and regulations on copyright, Zano Mirosław Zarotyński Company, reserves the copyright of drawings, descriptions, 3D models, renderings, graphics, content contained in offers, attachments to offers and all other documents. Its content is the intellectual property of ZANO Mirosław Zarotyński company. The use of author's ideas, solutions, copying, distribution of photos, graphics or fragments of graphics, descriptive texts, for profit, without the permission of the author - ZANO Mirosław Zarotyński company - is prohibited and constitutes a copyright infringement and is punishable.



ZANO Street Furniture  
Lindegó 7A, 30-148  
Cracow, Poland

phone: +48 12 200 20 53  
email: office@zano.pl

Number:	260719-v1
Sheet:	A4
Scale:	1:30
Mass:	with soft wood 168 lb with hard wood 346 lb